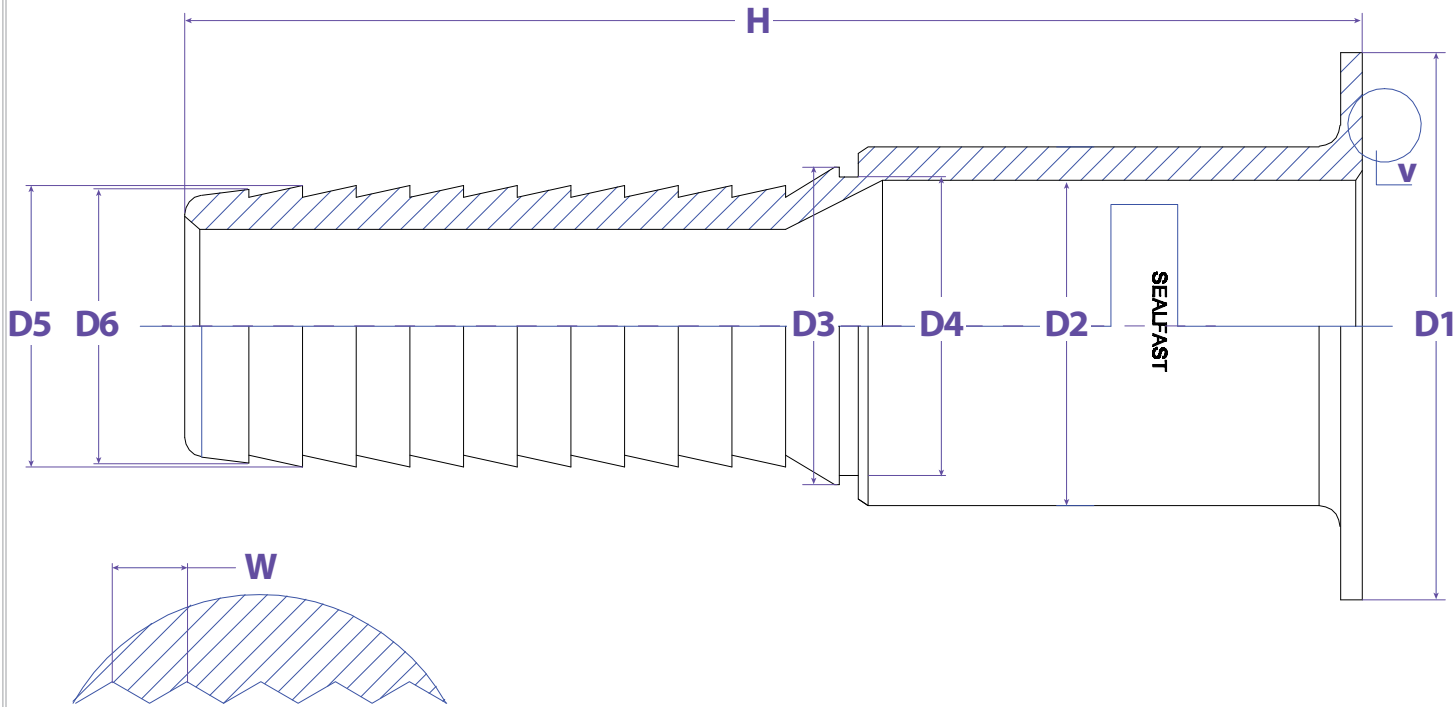




**SEALFAST**  
THE SIMPLE SOLUTION

# COUPLINGS & ACCESSORIES



KC TURN BACK

## FEATURES & APPLICATIONS:

### • General Uses:

A camlock fitting is a type of coupling that is used to connecting hose and or pipes together that transfers liquids, powders and granules. A straight through connection is made that maintains the pipe size and allows the free flow of materials being transferred.

Size	Working PSI	D1	D2	D3	D4	D5	D6	H	W	PART #
1"	150	2.008	1.339	1.268	1.169	1.035	1.004	4.331	0.039	SF100SSPTB6C
1-1/4"	150	2.512	1.681	1.518				4.567	0.039	SF125SSPTB6C
1-1/2"	150	2.882	1.913	1.677	1.563	1.535	1.504	4.870	0.059	SF150SSPTB6C
2"	150	3.622	2.382	2.185	2.059	2.031	1.996	5.657	0.059	SF200SSPTB6C
2-1/2"	150	4.134	2.874	2.728			2.531	6.496	0.157	SF250SSPTB6C
3"	150	5.000	3.500	3.315	3.150	3.031	2.992	7.224	0.079	SF300SSPTB6C
4"	150	6.181	4.500	4.311	4.157	4.031	4.004	8.150	0.079	SF400SSPTB6C
6"	150	8.504	6.626	6.358	6.181	6.047	6.024	10.079	0.079	SF600SSPTB6C

### WARNING:

Cam & Groove Couplings should **NOT** be used with any compressed gas, including steam or air. Metal fittings should **NOT** be used with Polypropylene Cam & Groove. Dust Caps and Dust Plugs are **NOT** designed for pressure applications.

Note: All Seal Fast Cam & Groove Stainless Bodies are 316 Investment with 304 Handles.

## TITLE CRIMPTEK COMBO NIPPLES - KC TURN BACK

### DISCLAIMER

All drawings and specifications are subject to change without notice. Drawings represent general dimensions of our products. Seal Fast cannot guarantee the dimensions in the drawing will exactly match those in the drawing. This drawing is the property of Seal Fast Inc. Copying or reproduction of this drawing is expressly prohibited.

### MATERIAL

SUS 316

DRAWING NOT TO SCALE

### PART #

SF...SSTB6C



sales@sealfast.com

800.231.0734

sealfast.com

5603 Harvey Wilson Drive, Houston, TX 77020